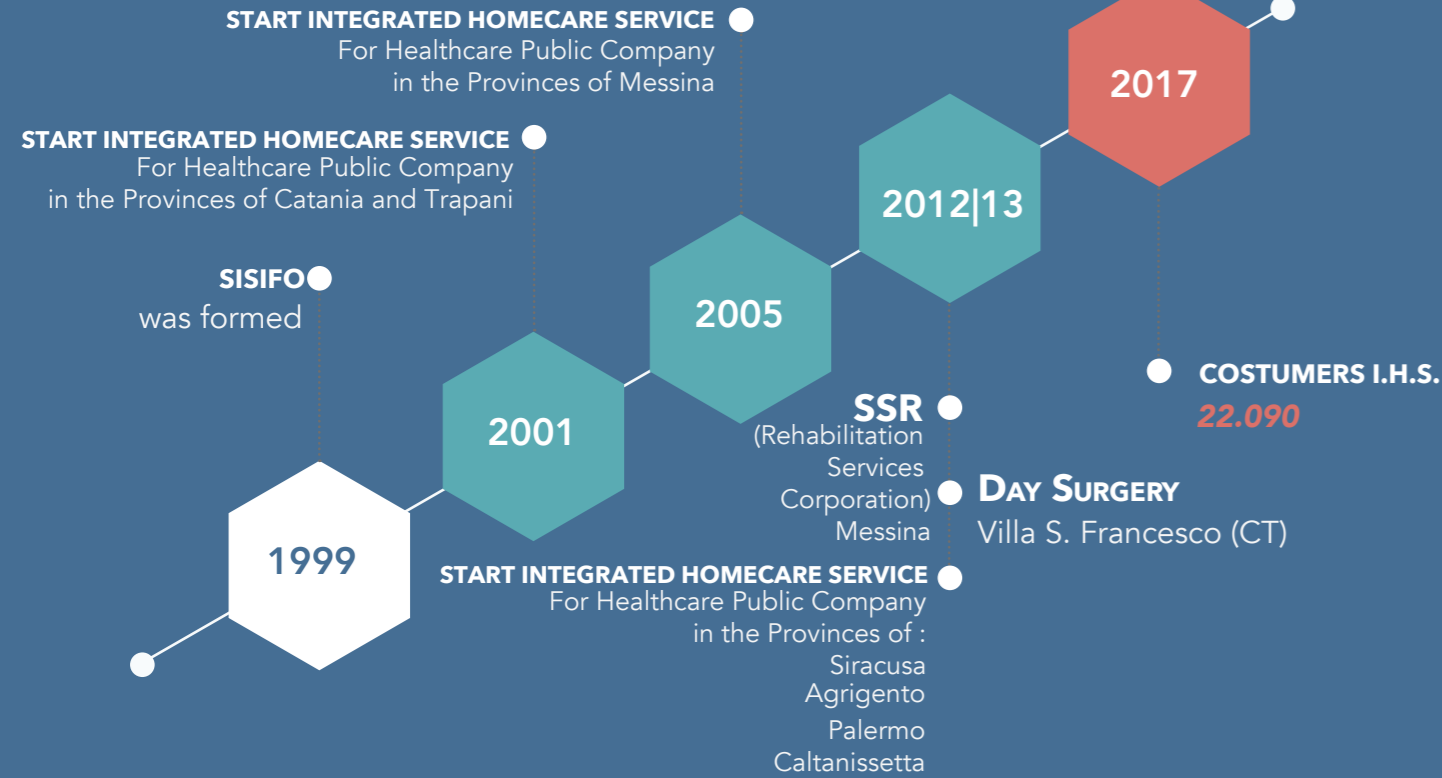


## History



## Stakeholders

University  
Media  
Citizen  
Territory

Workers  
Protection  
Association  
Cooperative  
companies  
Banks  
Consortia  
Training bodies

Users  
Families  
Customers  
Workers

Members  
Shareholder

**Sisifo**  
CONSORZIO DI COOPERATIVE SOCIALI A.R.L.

## Contact Person:

**Domenico Arena**  
+39 335 750 6149  
presidenza@consorziosisifo.it

**Roberto Rocuzzo**  
+39 335 620 4617  
progetti.ricerca@consorziosisifo.it



FIRST OF ALL: QUALITY

**HOME HEALTHCARE**  
SERVICE CHARTER

**Sisifo**  
CONSORZIO DI COOPERATIVE SOCIALI A.R.L.

## SISIFO Consortium of Social Cooperatives

Registered office: via A. Borrelli, 3 90139 Palermo  
Administration offices: P.zza Roma, 16 95125 Catania  
Phone: +39 095.501.763 - Fax: +39 095.431.191  
E-mail: info@consorziosisifo.it - Pec: sisifo@pec.consorziosisifo.it  
VAT number: 047 9935 0 82 4 - Registration Coop. n.A150791

[www.consorziosisifo.it](http://www.consorziosisifo.it)



**Sisifo**  
CONSORZIO DI COOPERATIVE SOCIALI A.R.L.



**We are a quality brand  
synonymous with home health care**

Sisifo is a Consortium of Social Cooperatives established in July 1999 in accordance with Italian law no. 381/91.

Adhering since the beginning to the National League of Cooperatives and Mutual Societies, counts among its members the Sicilian Cooperatives that over the years have better performed the role of players within the Italian welfare state.

Today Sisifo is an economic entity that has developed its own know-how in the field of home health care addressed to critically ill patients, post-trauma and patients in the terminal phase.

Sisifo is a networking organisation that focuses on the synergy of its members, through a streamlined and systemic organisation capable of transforming social issues into value for its member companies and key stakeholders.

Only in the last year 1,155 586 healthcare services were provided to over 22,080 patients at home.

Sisifo aims to ensure the growth and development of cooperatives members and to affirm the role of social entrepreneurship for sustainable development and is proposed as a system with the ability to continuously innovate services, processes, cultures and people.

Sisifo is inspired by the principles that underlie the worldwide cooperative movement and acts in relation to them: mutuality, association between cooperatives, respect for the person, the priority of the human being over money, and the internal and external democracy.

In order to fulfil its activities Sisifo can count on about 1700 employees with high professionalism and competence in the health and social fields: doctors, nurses, rehabilitation therapists, speech therapists, psychologists, social workers and medical social workers are the driving force that provides patients with high-quality health services 365 days a year.

## HOME HEALTHCARE

- The Integrated Homecare Assistance (A.D.I)

It is aimed at patients who require therapeutic plans to the completion of their post-acute rehabilitation programme. It functions as a home-based hospital and ensures complex health interventions.

- Home Care for Terminally Ill Patients (A.D.M.T.)

It is aimed at patients who need palliative care, our multidisciplinary team takes care of every single patient and his family to help them live with dignity every moment of life.

### Sisifo is committed every day:

- in facilitating citizens in the enjoyment of health home care services,
- in guaranteeing a transparent path of the therapeutic process linked to the needs of the person,
- in promoting and developing social and health integration.

Sisifo proposes several types and methods of intervention, divided according to the different health intensity required in line with the indications of the World Health Organisation.

Every day Sisifo experiences the trust that is constantly granted by the institutions and more importantly by the users and their families.

Sisifo promotes high-tech services. In an increasingly long-lived society, the need to have innovative solutions accessible in the field of assistance services is absolutely necessary. Using the best technology available on the market – for home health care – means raising the level of care.

The word innovation closes the motivation that leads to choose Sisifo. In the face of so many new projects, which extend the ranks of what already exists without proposing a real transformation, Sisifo instead aims at changing the state of things, in order to improve the quality of people's lives.

**We daily spend all our passion for a job that we love doing.**

**Activities 2016**

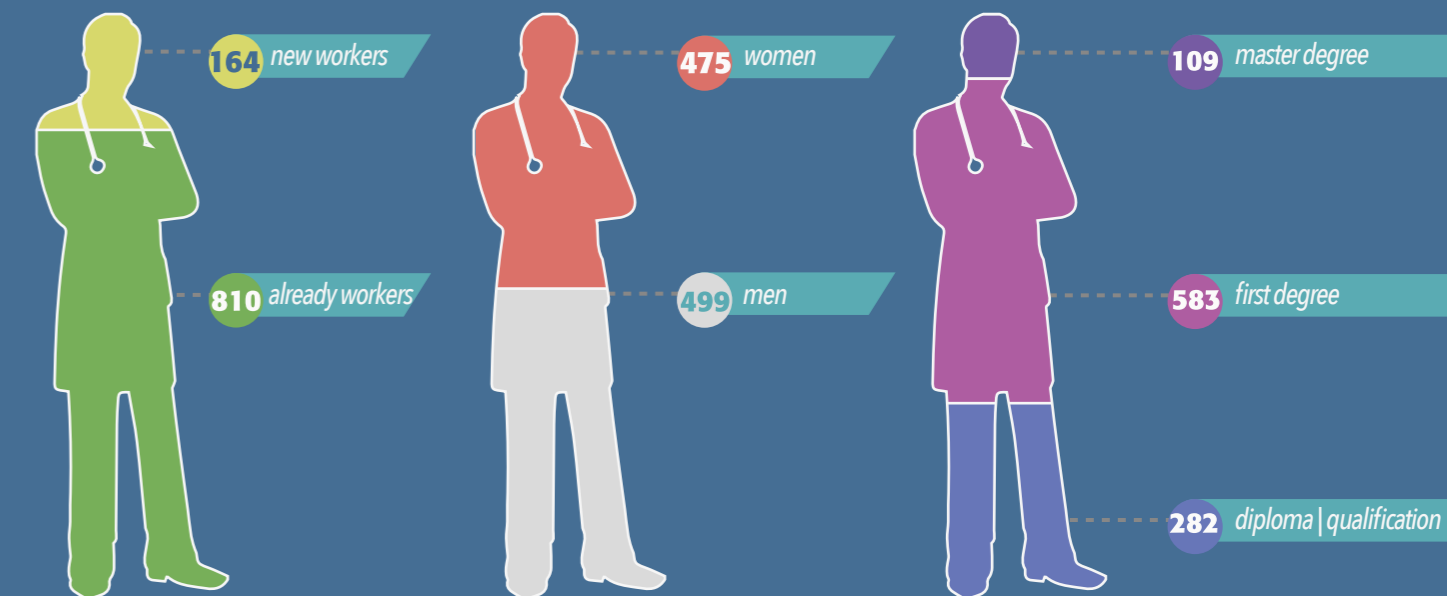
**1.155.586\***

**Patients 2016**

**22.090**

\*HOME HOSPITALIZATION IS CHARACTERIZED BY THE HIGH QUALITY LEVEL, THE COMPLEXITY OF THE TREATMENTS, IT HAS LENT IS THE EXTREME DEGREE OF PERSONALIZATION OF THE INTERVENTIONS FOR VERY SERIOUS PATHOLOGIES. THIS TYPE OF CARE CORRESPONDS TO ABOUT 30% OF THE TOTAL SERVICES PERFORMED.

### Workers home healthcare



Workers average age 35years